

WASTE NOT, PAY NOT!

ABOUT SOUTHOLD'S PAY-AS-YOU-THROW (PAYT) "TOWN BAG" GARBAGE DISPOSAL PROGRAM



GARBAGE disposal is a service just like electricity, gas, and water. You pay for only what you use of these utilities. Why should garbage be any different? This brochure explains all about "pay-as-you-throw" and the Town's "yellow bag" garbage system.

SOUTHOLD TOWN DEPARTMENT OF SOLID WASTE

Transfer Station/Recycling Center/Compost Site:

6155 Cox Lane, Cutchogue, NY 11935.

(631) 734-7685

www.southoldtownny.gov

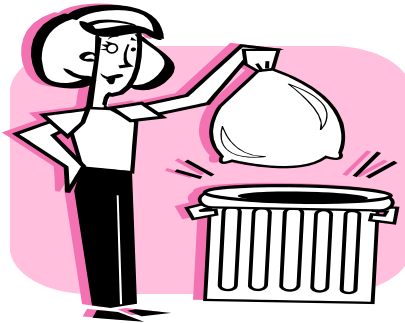
(click on "Departments", then "Waste Management")



June 2014

WHAT IS PAY-AS-YOU-THROW ?

It is a fee-type system that charges residents for trash disposal based on the amount of waste they throw away. State and federal laws require that waste generation be reduced through recycling and that what's left be disposed of safely. Since today's disposal methods are considerably more expensive than open dumps and burn barrels of the past, thousands of communities around the country have turned to PAYT as a fair way to cover these costs. When combined with a broad recycling program PAYT promotes waste reduction and increased recycling. It gives **you** an incentive to control how much trash **you** produce – and how much **you** pay for it.



PAYT IN SOUTHOLD

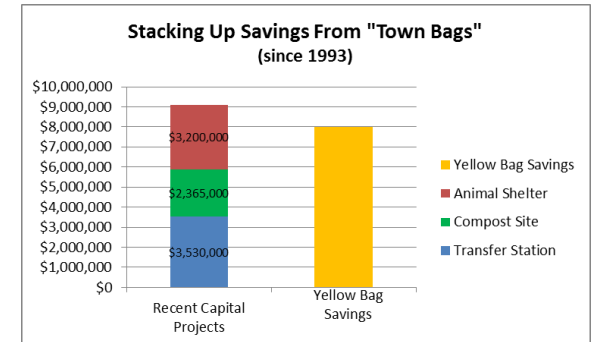
Southold started "pay-as-you-throw" in 1993 through its "yellow bag" garbage program. (Other variations of PAYT use special 'trash tags' or cans, but bags were felt to be easier since people already used bags for their trash). The program was initially chosen as the way to pay for shipping the Town's garbage out of town for disposal following a court decision requiring closure of old Cutchogue landfill. As it turned out, not only did the program



Trailer Loaded With Garbage Leaves Southold

raise the necessary revenue to cover disposal costs, it helped reduce the amount of waste generated and resulted in a **MAJOR** increase in recycling: Over 70% the first year, bringing Southold into quick compliance with State-mandated recycling goals!

In addition, the program is estimated to have saved the Town over \$8,000,000 since it began through avoided disposal costs (i.e., waste that was either recycled or not recycled at all) and from the sale of additional recyclables that were – *and continue to be* – generated. This is nearly equivalent to the cost of the three largest infrastructure improvements made by the Town over that time: the compost site; the new transfer station; and the new animal shelter.



Source: Solid Waste Management District

THE "YELLOW BAGS" . . . are, supplied only by the Town, and are intended for the disposal of everyday household garbage. (Bulky items or waste that is difficult to bag are paid for at the Transfer Station scales by weight). The bags come in three different sizes and are required both for self-haulers as well as residents who use private carters. They are priced to cover the cost of disposing the waste they contain, and are available at many local retailers as well as at the Cutchogue Transfer Station and Town Hall in Southold. (SEE LIST OF TOWN BAG RETAILERS ON BACK OF THIS BROCHURE)

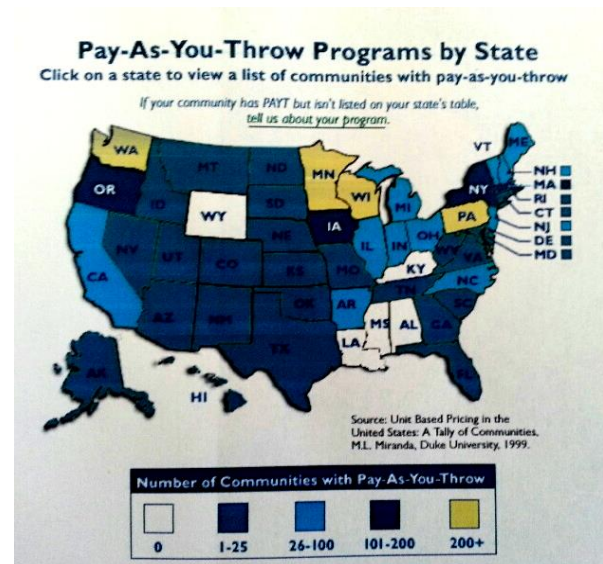
BEYOND FAIR: THE BENEFITS OF "PAYT"

- Reduced waste generation
- Increased recycling
- Cost incentive reduces need for coercive enforcement of recycling laws
- Resource conservation (using virgin materials in manufacturing consumes more energy and other resources than using recycled content)
- Awareness of our own “waste-full” practices
- Pressure from consumers on gov’t. and industry to find ways to recycle even *more!*
- Less waste going to landfills
- Simpler municipal budgeting: when the bag is purchased, the cost of shipping the garbage that will go into the bag is automatically paid.
- Allows immediate control over YOUR OWN garbage costs. Tax-based systems allow no such control, and actually encourage wasteful disposal practices.
- Check out epa.gov and dec.ny.gov for more information on “PAYT” in New York State and around the country.

PAYT ELSEWHERE

You’ve likely seen some form of PAYT in places other than Southold. It is used in Southampton and on Shelter Island, as well as in over 7,000 communities across the US. It is especially common in New England, the Midwest, and the Pacific Northwest. And not just in small towns either: Cities such as Seattle, Kansas City, and Omaha have used it for many years, and New York City has reportedly been looking into the feasibility of it as well.

The success of “Pay-As-You-Throw” in driving down waste and driving up recycling has made it the key strategy in the New York State Solid Waste Management Plan adopted by DEC in 2013, which mandates solid waste planning at the local level throughout the state.



Source: US Environmental Protection Agency

Town Bag Retailers:

Mattituck

- Mattituck 7-11
- Handy Pantry
- Orłowski Hardware
- BP Gas

Cutchogue

- Cutchogue Pharmacy
- Cutchogue 7-11
- King Kullen
- Valero Gas

Peconic

- BP Gas

Southold

- Hart’s Hardware
- Southold Town Clerk
- Southold Pharmacy
- Rothman’s
- Southold Hardware
- Agway
- Southold IGA
- Polywoda Beverage
- Southold 7-11

Greenport

- Riverhead Building Supply
- Greenport 7-11
- Mr. Roberts
- Greenport IGA
- Colonial Drugs
- White’s Hardware
- Patriot Gas
- Layyah

East Marion

- Fork & Anchor

Orient

- Orient Country Store